

LOS ANGELES COUNTY
ATI OFFICE



Alternatives to Incarceration

"Care First, Jails Last"

Inaugural ATI Impact Report

2020 - 2021

The Alternatives to Incarceration (ATI) Office was launched in September 2020 as a new initiative within the Los Angeles County Chief Executive Office.

Creating a new unit is no easy feat and the office continues to expand and increase its scope as a leader helping bring to life the Board of Supervisors' vision of *Care First, Jails Last*.

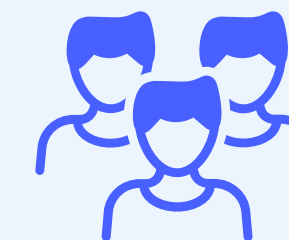
Launched in Sep 2020

The ATI Office has:



Alternative Crisis Response

Supported the expansion of Alternative Crisis Response



Program Pilots & Expansions

Invested in the countywide expansion of Youth Diversion & the Rapid Diversion Court Program, and piloted programs such as ATI Pre-Filing Diversion & the ATI Incubation Academy



Community Partnerships

Worked in partnership with community leaders to advance ways to address the impact of racial injustice in the criminal justice system



Program Oversight

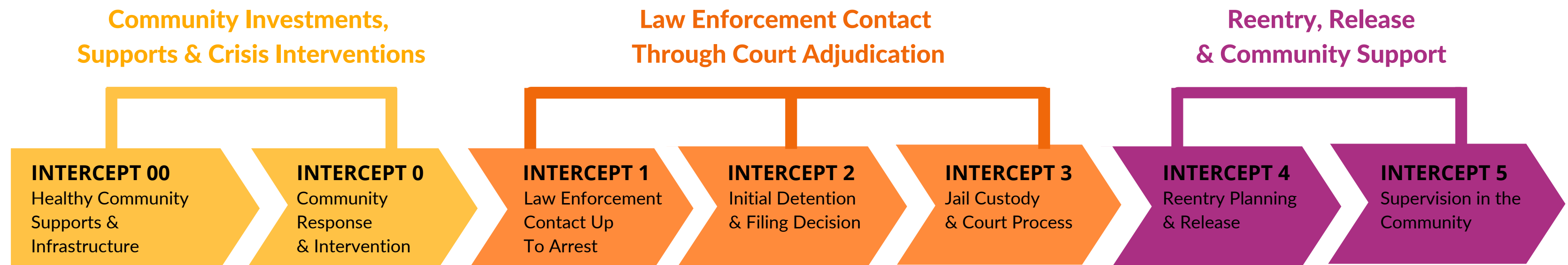
Overseen the Care First Community Investment (Measure J) spending plan process

ATI Office's Guiding Principle: The *Sequential Intercept Model*

The *Sequential Intercept Model* is foundational to the ATI Office's approach to policy development and implementation. The *Intercept Model* demonstrates how individuals with critical unmet needs, such as mental health & substance use disorders, housing & economic instability, or those simply in crisis, first come into contact with and subsequently move through the criminal justice system. We've determined there are phases that are critical for interventions to provide the best outcome for individuals and our communities as a whole. The *Intercept Model* doesn't just meet people at critical junctures, *it disrupts their downward trajectory*.

The *Intercept Model* is used to identify gaps in services and resources, and is predicated on a process that brings together community advocates, service providers, municipal departments, and other stakeholders to prevent involvement with the criminal justice system.

Each of the four main areas in which ATI works connects to this model, which is the strategic backbone for the Office's endeavors.



Care First Community Investment

- **Year 1 Investment**

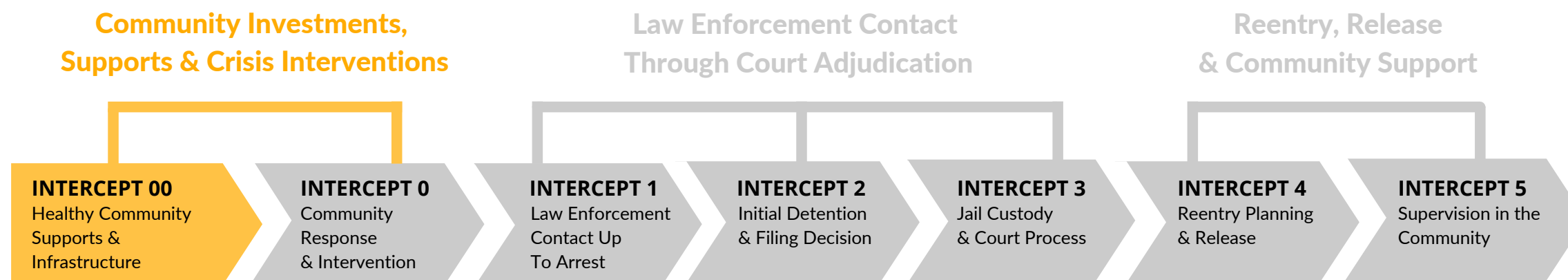
Advanced an unprecedented **\$187.7** million spending package for direct community investments to address the impact of racial injustice in the criminal justice system through economic opportunity; diversion, behavioral health, and mental/physical health; education access and youth development; housing; and reentry.

- **Care First Community Investment Third-Party Administrator**

Established an innovative solicitation process to identify community-based, third-party administrator(s) for a portion of Care First Community Investment funds to increase access to sustainable funding for smaller, grassroots, community-based organizations.

- **Community Engagement**

Committed to a thorough and active community engagement program that includes the release of a solicitation for a consultant to improve the process for developing priorities to inform the Care First Community Investment Advisory Committee's Fiscal Year 2022-2023 recommendations.





INTERCEPT 0
Community
Response
& Intervention

Alternative Crisis Response: Implementation

- **Rolling Out 988 - An Alternative to 911**

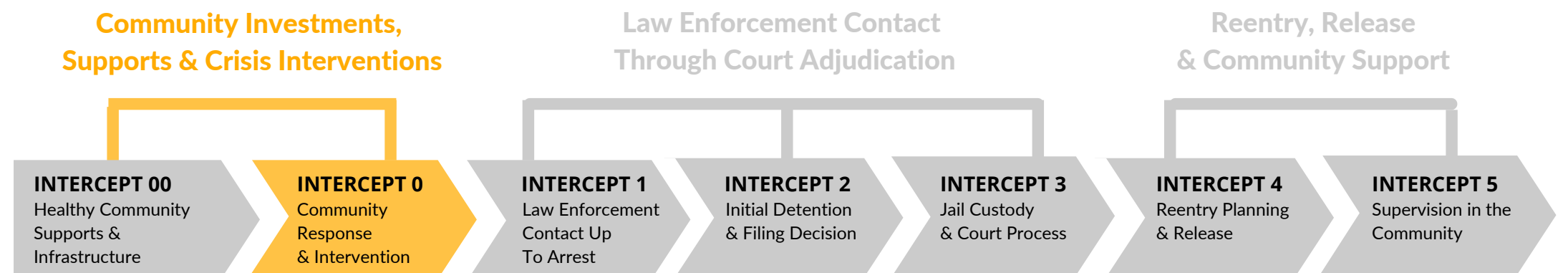
The forthcoming 988 number for behavioral health emergency response promises to elevate behavioral health crisis/emergency service and build a crisis support network. ATI, in conjunction with the Department of Mental Health, has been laying the foundation for this shift and has established workgroups to identify and resolve operational, logistics, and client engagement issues to develop call centers, mobile response teams, and crisis stabilization facilities across the county.

- **Leveraged State and Federal Funds**

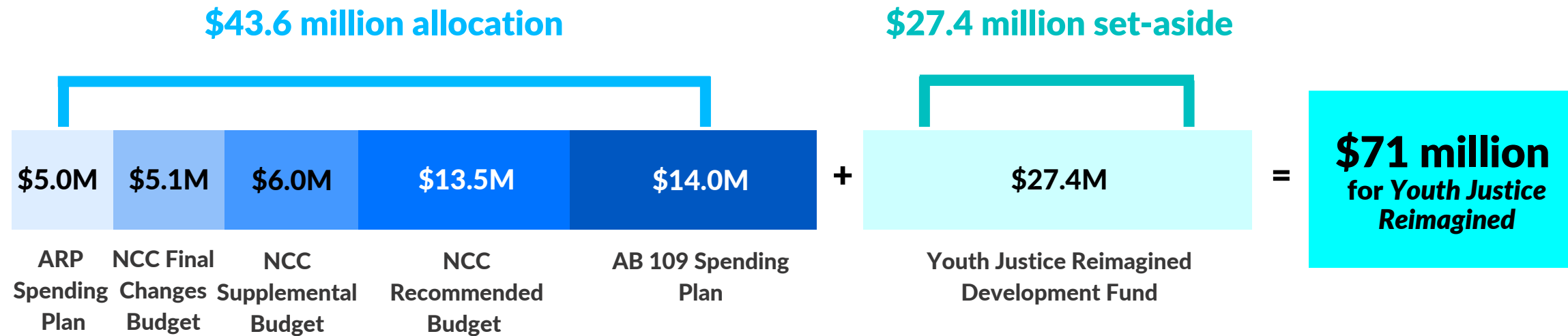
Secured **\$18.5 million** in American Rescue Plan and **\$30 million** in AB 109 funds to support Alternative Crisis Response expansion, with an additional **\$20 million** in State funds to support expansion of **988 crisis call centers** statewide.

- **Expanded Crisis Call Center**

Facilitated partnership between Didi Hirsch's Suicide Prevention Center and the Los Angeles Police Department to divert nearly **600 behavioral health crisis calls**. This pilot expanded to 24/7 operation in July 2021.



Youth Justice Reimagined

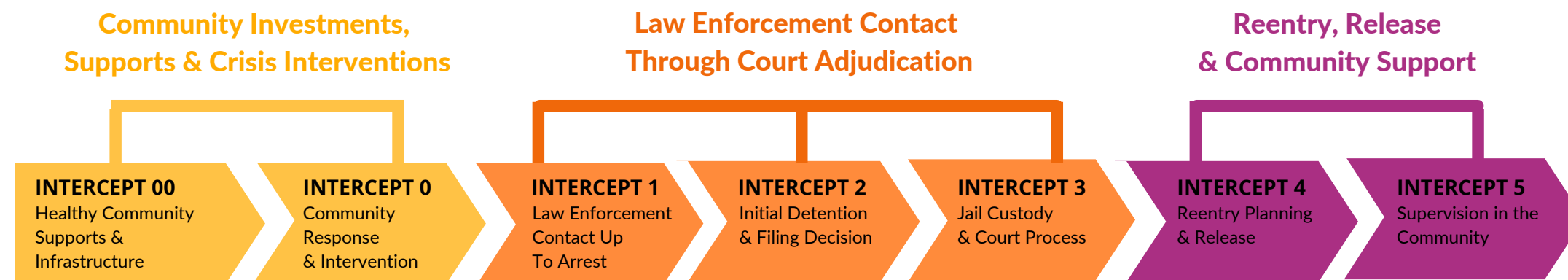


- Youth-focused funding throughout the FY 2021-2022 budgeting process**

More than **\$43 million** is committed in the Fiscal Year 2021-2022 to mentoring, housing, jobs, arts and diversion programs and services for youth in need.

- Youth Justice Reimagined Development Fund**

\$27.4 million one-time funding is being set aside to support the implementation of the Youth Development Department and related needs.





ATI Program Pilots & Expansions

INTERCEPT 2
Initial Detention
& Filing Decision

- **ATI Pre-Filing Diversion Program**

Partnered with law enforcement agencies across LA County to launch a program, connecting eligible individuals with mental health, substance use, or housing needs to services in lieu of charges being filed. Operates **24/7** and will expand to additional sites.

INTERCEPT 3
Jail Custody
& Court Process

- **Rapid Diversion Program**

Expanded MacArthur Foundation-funded pilot with pre-plea diversion program that, via state law, diverts individuals with mental health or substance use disorders into treatment. The program is now operating at **seven courthouses** throughout the county.

INTERCEPT 00 - 5

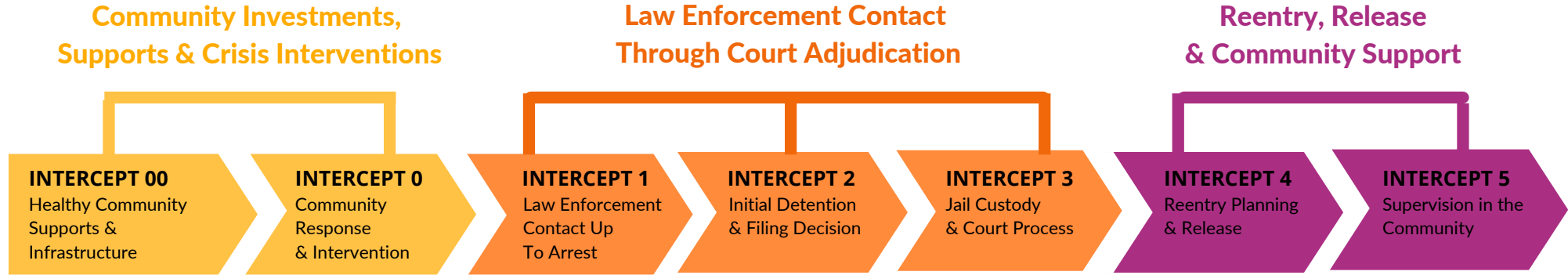
- **ATI Incubation Academy**

Launched the first cohort of **23 grassroots and community organizations** to build capacity, provide technical assistance, and scale frontline service delivery from new and existing community-based organizations, especially those who serve underrepresented and justice-involved populations.

INTERCEPT 00 / 5

- **LA Fire Camp**

Identified **\$5 million** to launch a new fire camp to train previously incarcerated young adults for careers in public safety, emergency management, and firefighting.



Engaging with the Community

The ATI Office collaborated with community members, stakeholders, and County leadership in an unprecedented effort to create a spending plan focused on *Care First, Jails Last*.

Throughout the process, the ATI Office demonstrated its commitment to listening to community voices. Here's a snapshot of that effort, by the numbers:

Care First Community Investment Engagement



130

Hours of community meetings for Care First Community Investment (formerly Measure J)



1,608

Individuals engaged over the course of 19 advisory meetings, 25 subcommittee meetings, and 2 listening sessions



125

Public comments heard



400+

Additional written public comments

Additional Engagements



430+

Hours of community meetings, averaging 100-200 attendees



120+

Additional hours meeting one-on-one with individual community and philanthropic organizations



21

Organizations in ATI's Community Cabinet advisory board (meet monthly)



8,200+

Email subscribers receiving ATI's weekly email newsletter

LOS ANGELES COUNTY ATI OFFICE



Alternatives to Incarceration

"Care First, Jails Last"

